

NEMUS 3000

Universal drum screen



Universal drum screen with hydraulic or electric drive

Screening is a key process step in modern material flow management. Komptech fulfills this requirement with its many years of experience in screening machine construction – optimally implemented by the Nemus trommel screen. **The new Nemus 3000** combines the proven strengths of its predecessors with innovative solutions for greater convenience and efficiency.

Whether hydraulic or electric drive (E version), as a trailer or self-propelled on tracks, with fine particle discharge on the left or right – it **meets virtually all customer requirements**. Details such as the hydraulically foldable side wall, the extendable drive unit, and the easy replacement of the hopper belt and collection belt ensure maximum ease of maintenance.



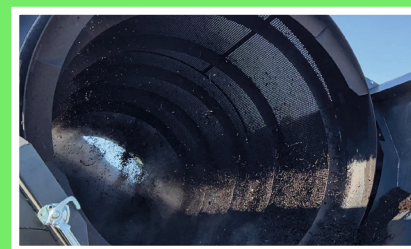
01 | Engine

- Powerful Perkins Diesel engine with the latest emission standards
- Fully encapsulated engine compartment for noise reduction
- Nemus 3000 E: Optional diesel generator and grid connection



02 | Hopper

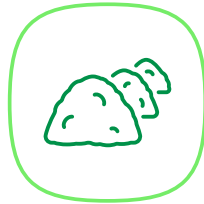
- 4 m loading length and more than 5 m³ capacity
- Drum-side hopper belt drive for better power transfer
- Automatic straight-run control for conveyor belt



03 | Screen drum and drive

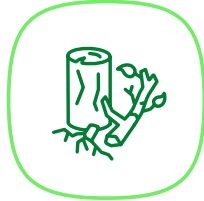
- Quiet-running, low-wear Drumgrip drum drive
- Complete drum change can be done without tools
- Nemus 620: Designed for drums from competitors

Wide range of applications



Compost

Adjustable hopper and drum speeds enable precise adaptation to the compost, and the **load-dependent hopper control** prevents overfilling of the drum.



Biomass, bark, chips, waste wood

Steep hopper walls prevent bridging, and a conveyor with nubs moves the feedstock to the drum dependably. A discharge height of up to 3.5 metres permits high material cones.



Excavated earth, sand, gravel, light C&D waste

Heavy materials aren't a problem; a hopper pre-screen keeps massive contraries out. The **hopper belt control** prevents belt tilting, and screen drums with walls up to 10 millimetres thick give long service.



Waste (preshredded)

Enough room between the drum and sidewall ensures stoppage-free operation even with larger screen holes as is often the case with waste screening. The **foldable side wall** also provides easy access for cleaning.



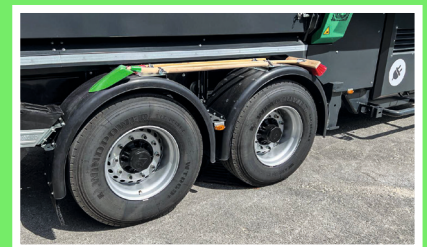
04 | Discharge system

- Inclination of discharge conveyors flexibly adjustable
- Fine fraction discharge possible on the left or right
- Wind sifter as option for coarse fraction discharge conveyor



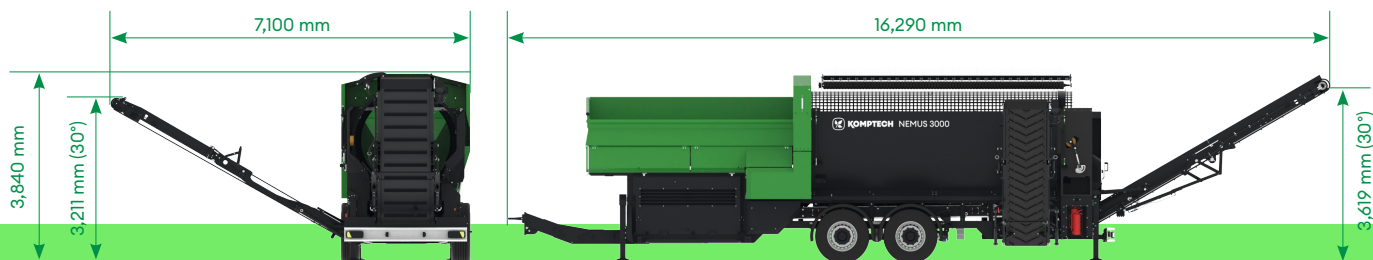
05 | Control

- User-friendly control panel with 5.7-inch color display
- Ideal positioning of all elements prevents incorrect operation
- Radio remote control with display as an option



06 | Frame & chassis

- Practical detail: cleaning tools mounted on the mudguards
- Sturdy chassis with robust support legs for secure position
- Mobility variants: Trailer, Semi-trailer and Track



55

Engine power (kW)

5

Hopper volume (m³)

30

Screening area (m²)

170

Throughput (m³/h)

Engine

Type..... Diesel engine / Diesel generator (E)
Power (kW/HP)..... 55/74

Material feeding

Hopper volume (m³)..... 5
Feeding length (mm)..... 4,100
Feeding width (mm)..... 1,674
Feeding height (mm)..... 2,808

Material discharge (Trailer)

Max. discharge height coarse fraction (mm)..... 3,619
Max. discharge height fine fraction (mm)..... 3,211

Weight (depending on features)

Trailer (t) 19
Track (t) 22

Screening drum

Screening area (m²)..... 30
Length (mm)..... 5,500
Screening drum diameter (mm)..... 2,000
Max. drum rpm..... 23
Drum drive..... Drumgrip or chainwheel

Throughput (depending on material)

Throughput (m³/h)..... up to 170

Dimensions transport (L x W x H)

Trailer (mm)..... 12,000 x 2,550 x 4,000
Track (mm)..... 10,516 x 2,950 x 3,500

Dimensions working position (L x W x H)

Trailer (mm)..... 16,290 x 7,100 x 3,840
Track (mm)..... 14,737 x 7,300 x 3,840

Komptech GmbH
Kühau 37
8130 Frohnleiten, Austria
+43 3126 505 - 0
info@komptech.com

Nemus online
Look here for
the latest updates,
specifications and more
detailed descriptions:

